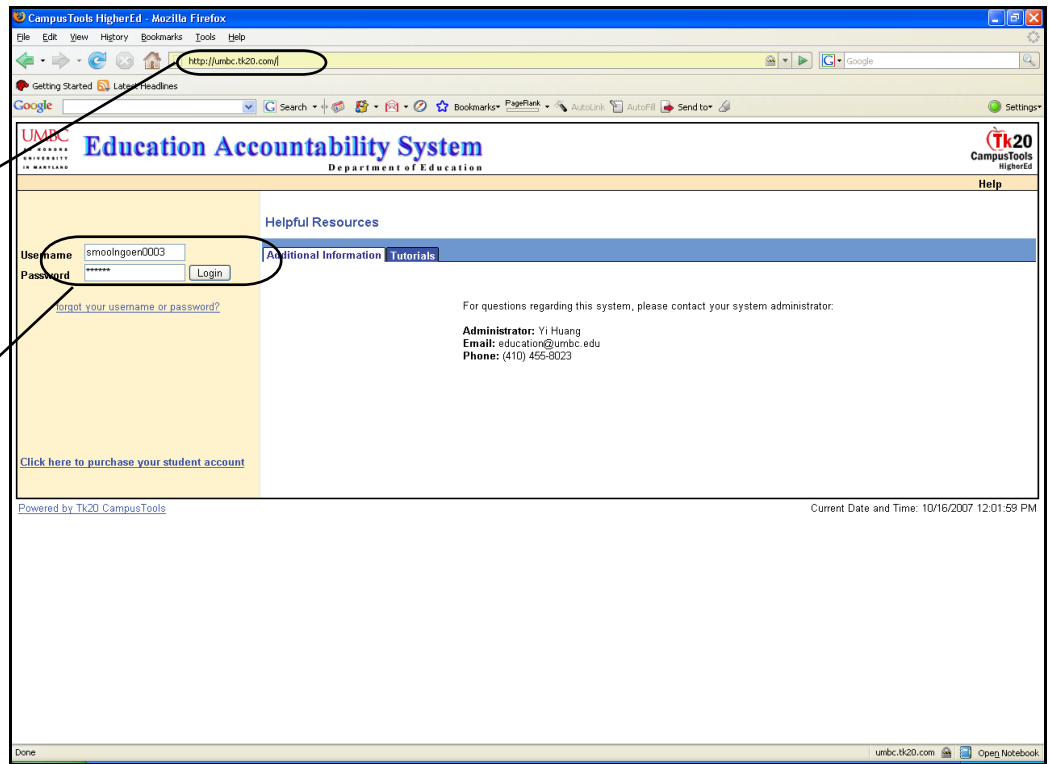


Education Accountability System (EAS) via Tk20 Guide to Completing Secondary Phase I to Phase II Transition Performance Assessment (Mentor Teacher Only)

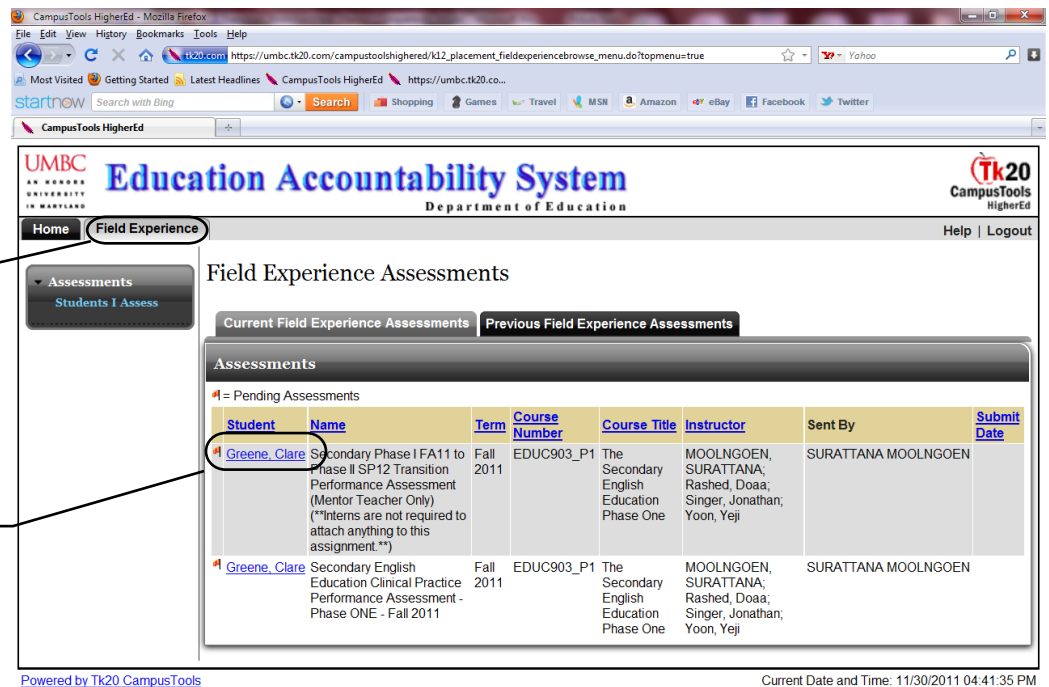
Step 1: Visit EAS site at:
"<http://umbc.tk20.com>"

Step 2: Enter your EAS
via Tk20 username and
password and click *Login*

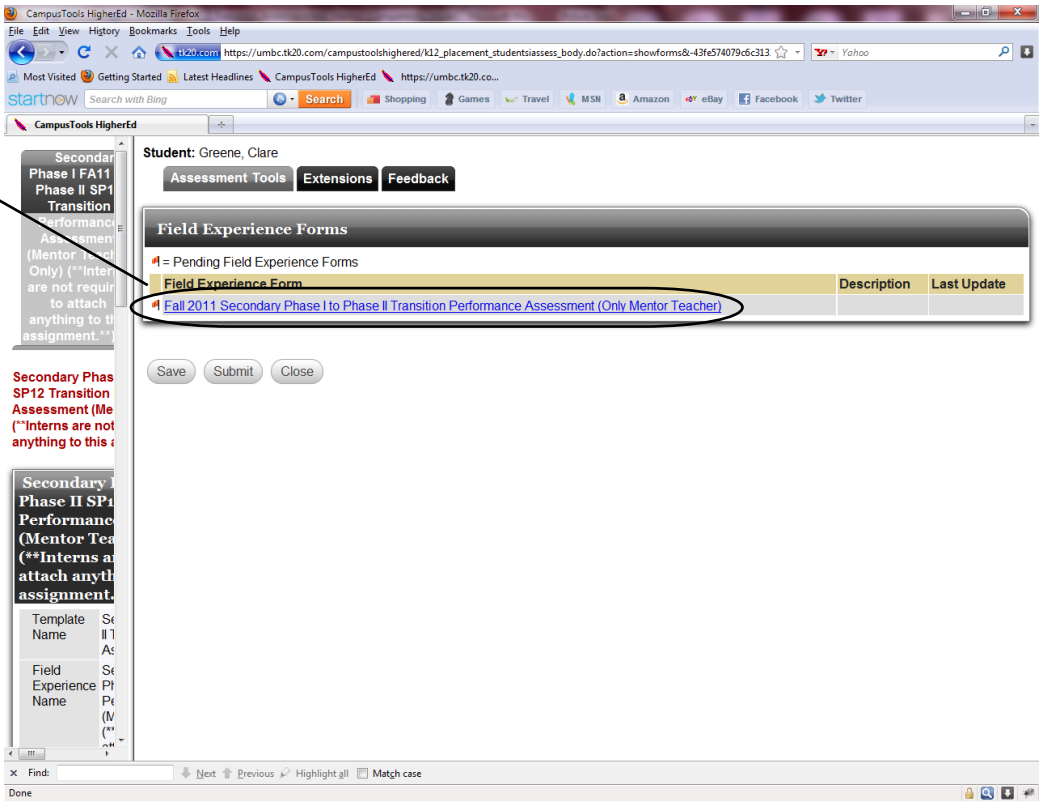


Step 3: Click on the
"Field Experience" tab

Step 4: Under **Current Field Experience Assessments**, click on the candidate name

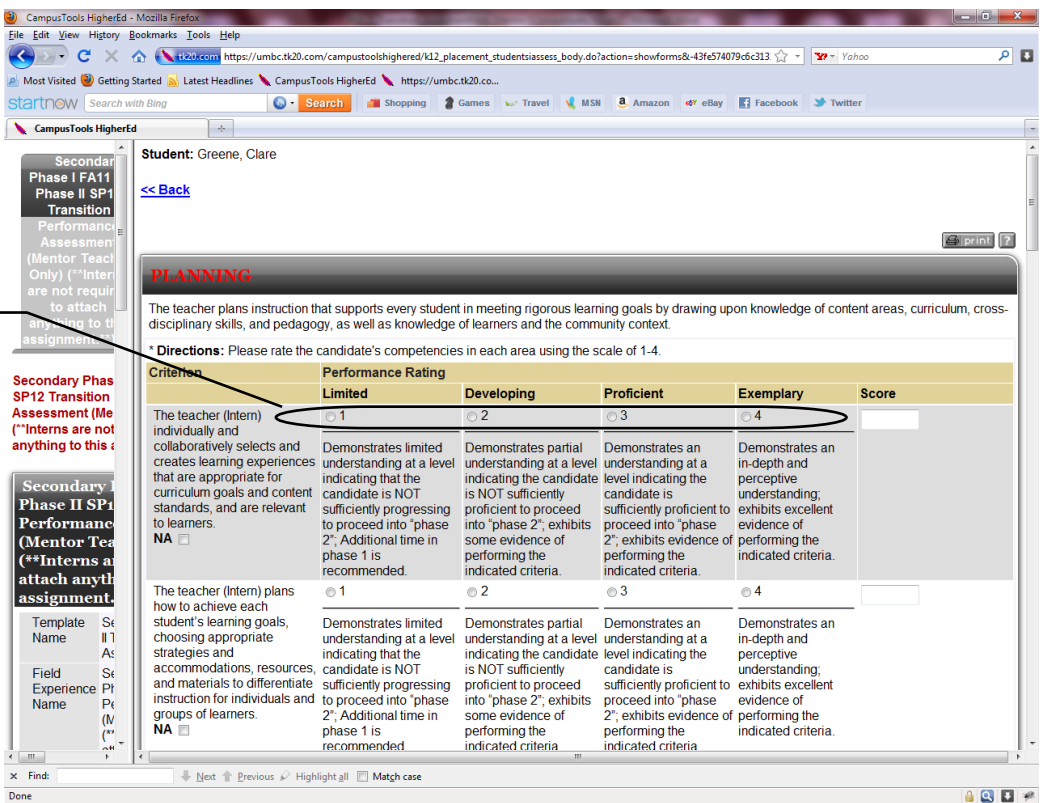


Step 5: Click on "Secondary Phase I to Phase II Transition Performance Assessment" link

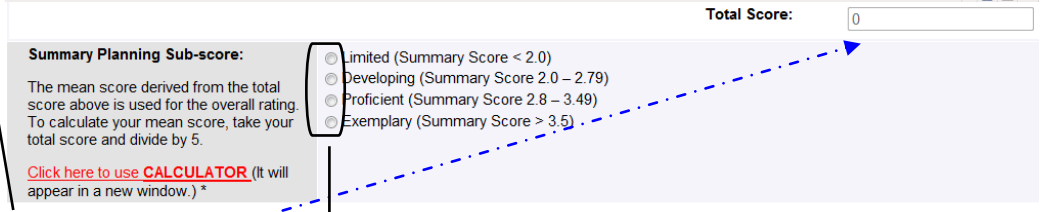


Step 6: On the assessment form provide competency rating for each of the criterion under each section:

1. **PLANNING**
2. **INSTRUCTIONAL STRATEGIES**



Step 7: After providing rating under each section, click on "Calculate Score" and the total score will appear in a Total Score box



Step 8: Provide an overall rating based on the given guidelines

TOTAL SCORE

TOTAL SCORE *

Limited
Both Sub-scores Assessed as below "Proficient"
Required conference with Secondary Education Coordinator and Director of Field Experiences

Developing
At least one Sub-score is "Proficient or Above"
Development of an intervention plan with clear benchmarks and timeline by Supervisor and Mentor.

Proficient
Both Sub-scores Between 2.8 – 3.5
Proceed to Phase 2

Exemplary
Both Sub-scores > 3.5
Proceed to Phase 2

Comments (Optional)

Comments

Calculate Scores

Grade

Grade

Total Score

Save Cancel

CampusTools HigherEd - Mozilla Firefox

File Edit View History Bookmarks Tools Help

https://umbc.tk20.com/campustoolshighered/k12_placement_studentsiassess_body.do?action=showforms&43fe574079c6c313

Most Visited Getting Started Latest Headlines CampusTools HigherEd

startnow Search with Bing

CampusTools HigherEd

Student: Greene, Clare

Assessment Tools Extensions Feedback

Field Experience Forms

[-] Pending Field Experience Forms

Field Experience Form	Description	Last Update
[-] Fall 2011 Secondary Phase I to Phase II Transition Performance Assessment (Only Mentor Teacher)		

Save Submit Close

Secondary Phase I FA11 Phase II SP1 Transition Performance Assessment (Mentor Teacher Only) (**Interns are not required to attach anything to this assignment...

Secondary Phase I Phase II SP1 Transition Performance Assessment (Mentor Teacher Only) (**Interns are not required to attach anything to this assignment...

Step 9: Provide a Total Score

Step 10 (Optional): Provide comments

Step 11: LEAVE IT BLANK

Step 12: click on "Save"

Step 13: Click on "Save" to save your assessment and come back later or click on "Submit" to submit the form

UMBC ANNESBOROUGH UNIVERSITY IN MARYLAND **Education Accountability System** Department of Education Tk20 CampusTools HigherEd

Home Field Experience Help | Logout



Assessments Students I Assess

Field Experience Assessments

Current Field Experience Assessments Previous Field Experience Assessments

Assessments

1 Pending Assessments

Student	Name	Term	Course Number	Course Title	Instructor	Sent By	Submit Date
 Greene, Clare	Secondary Phase I FA11 to Phase II SP12 Transition Performance Assessment (Mentor Teacher Only) (**Interns are not required to attach anything to this assignment.**)	Fall 2011	EDUC903_P1	The Secondary English Education Phase One	MOOLNGOEN, SURATTANA; Rashed, Doaa; Singer, Jonathan; Yoon, Yeji	SURATTANA MOOLNGOEN	
 Greene, Clare	Secondary English Education Clinical Practice Performance Assessment - Phase ONE - Fall 2011	Fall 2011	EDUC903_P1	The Secondary English Education Phase One	MOOLNGOEN, SURATTANA; Rashed, Doaa; Singer, Jonathan; Yoon, Yeji	SURATTANA MOOLNGOEN	

After clicking "Submit", you will be taken to the original page where you will see that the orange flag next to the intern's name has been replaced with a green checkmark indicating that the assessment has been completed.